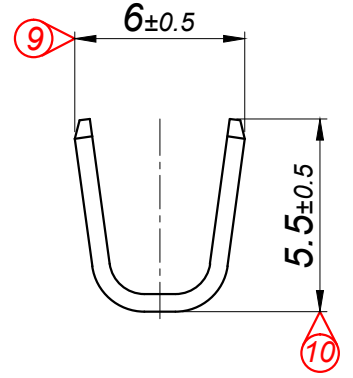
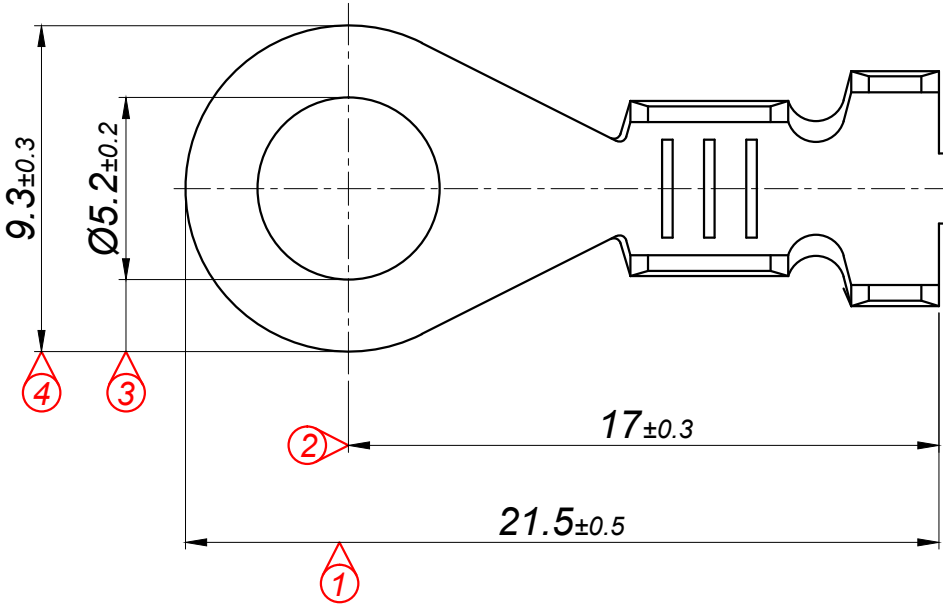
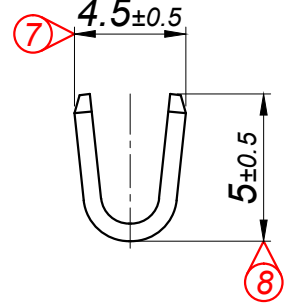
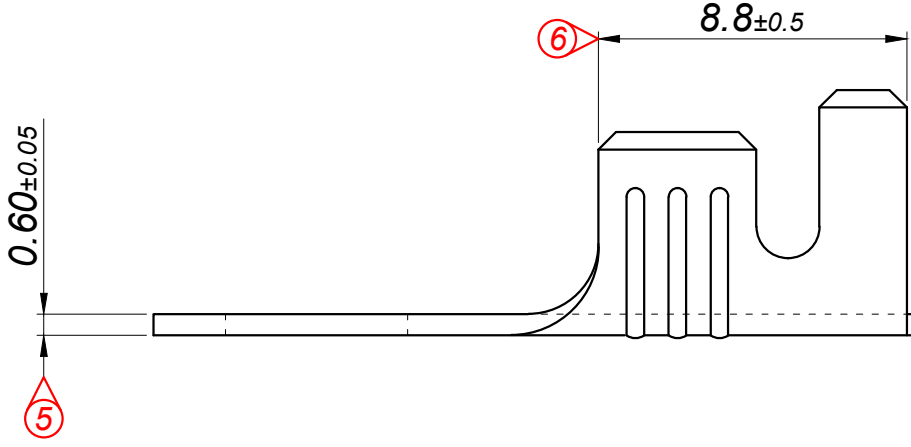
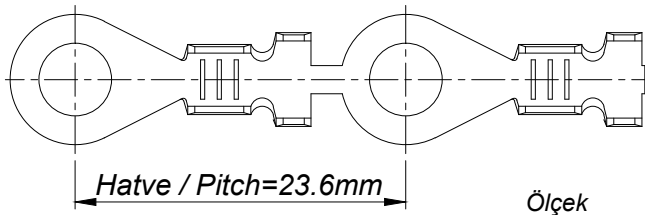


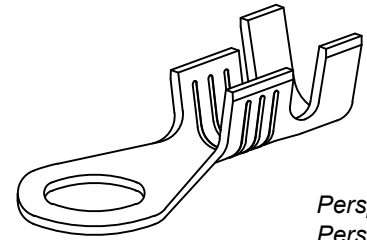
PARÇA KODU PART CODE	PARÇA ADI PART NAME	s ÖLÇÜSÜ (KALINLIK) s MEASURE (THICKNESS)	Malzeme Material	Kaplama / Coating		
				SN	AG	Nİ
TŞ 2485.60 DP	4 NO KABLO UÇ Ø5.2 OA (YENİ TİP) =DP=	-----	(CuZn30) Pirinç / Brass	-	-	-
TŞ 2485.60 RP	4 NO KABLO UÇ Ø5.2 OA (YENİ TİP) =RP=	-----	(CuZn30) Pirinç / Brass	-	-	-
TŞ 2485.60 RPK	4 NO KABLO UÇ Ø5.2 OA (YENİ TİP) =RPK=	-----	(CuZn30) Pirinç / Brass	+	-	-
TŞ 2485 RÇN	4 NO KABLO UÇ Ø5.2 OA (YENİ TİP) =RÇN=	-----	Paslanmaz Sac(430)	-	-	+



Kalıp çıkış yönü  
Mold output direction ← → Makara açılım yönü  
Reel opening direction




Ölçek  
Scale : 2 / 1



Perspektif  
Perspective

Kablo Kesiti  
Wire Section : 1 - 2.50 mm<sup>2</sup>

Resim üzerinden ölçü almayınız  
do not measure on drawing

Tarih / Date	30.11.2016	İmza / Signature	Ölçek / Scale		
Çizen / Desing	T.Topçu		5 / 1		
Onay / Approval	S.Gölcük		No	Değişiklik / Revision	Tarih/Date
	Parça Adı: Part Name	4 NO KABLO UÇ Ø5.2 ORTA AYAK (YENİ TİP)		Parça Kodu: Part Code	TŞ 2485